



more access better care

Building for a Healthier Future



New Bedford
Community Health

CAPITAL CAMPAIGN

about

New Bedford Community Health (NBCH) is a non-profit, multicultural, community health center based in the heart of downtown New Bedford.

For over 40 years, NBCH has been providing equitable, patient-centered, culturally competent care for anyone in southeastern Massachusetts – **regardless of their ability to pay**. NBCH's programs, services, staff and community values serve people from all walks of life. Employed or unemployed, new to the area or a lifelong resident, uninsured or insured, all who are in need of healthcare are welcomed.

All NBCH clinical staff are highly trained and board-certified within their specialty. Community Health Workers, as well as Certified Medical Interpreting staff, build trust and assure a diverse, medically under-served population that they will receive top-quality care.

Today, with a staff of more than 300 employees, expert clinicians and medical staff, and a vast amount of community programs, NBCH is making a lasting investment in the community – now and for generations to come.

Mission – To serve, educate and inspire patients to become more knowledgeable and participatory in their total health; To be a regional resource and leader focused on improving public health. **Vision** – To improve the health, well-being, and quality of life of each patient, their families and the greater community.

OUR COMMUNITY IMPACT*



21,294+

PATIENTS SERVED



1,235+

NEW PATIENTS



4,928+

CHILDREN AND
ADOLESCENTS SERVED



6,916+

INDIVIDUALS SERVED
THROUGH WIC



66,442+

IN-PERSON AND
TELEHEALTH VISITS



300–500

PEOPLE SERVED MONTHLY
AT THE MOBILE MARKET



29,448+

COVID-19 VACCINE
DOSES ADMINISTERED



10,365+

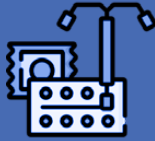
PATIENTS SERVED IN A LANGUAGE
OTHER THAN ENGLISH

* 2023 data

our services

We care for your health.

NBCH's vision of care is a product of over 40 years of listening to the needs and desires of the community and acting on them. We are proud of our strong history of improving the health of our community through quality, accessible health care.



Women's Health

NBCH's Women's Health program provides high-quality, sensitive, confidential care to a diverse community of female patients across the gender spectrum, from adolescence to advanced age.



Primary Care

NBCH's Adult Medicine department provides high quality primary care to adults. Expert staff provide patient-centered care, from routine wellness visits to the treatment of acute and chronic illnesses.



Urgent Care

The Urgent Care department is here for patients when they need same-day treatment for sickness or conditions that are not life-threatening, but need attention.



Pediatrics

From physical exams to vaccinations, NBCH ensures that your children feel comfortable with the care and customized treatment they receive.



Insurance Enrollment

To help individuals and families find affordable health insurance options, NBCH offers free health benefits counseling and enrollment assistance.



WIC

WIC is a nutrition program that provides nutrition and health education, healthy food and other services free of charge to Massachusetts families who qualify.



Ryan White Program

NBCH offers extensive treatment and case management services for people living with HIV. Testing for STDs/STIs and HIV is an easy and confidential process at NBCH.



Behavioral Health

NBCH offers behavioral health services that are integrated into primary care to promote overall health and wellbeing.



Office-Based Addiction Treatment

For patients struggling with addiction and want to stop using, or use more safely, NBCH's OBAT clinicians provide treatments that work.



Dental Care

Good oral health is linked to overall health and wellbeing. At the Dental Clinic, NBCH offers comprehensive general dentistry for the entire family.



more access.
better care.



THE NEED

New Bedford Community Health (NBCH) plays a vital role in providing equitable access to healthcare, particularly for under-served populations. However, the shortage of primary care services limits its capacity to meet the growing need for comprehensive, preventive, and continuous care. This gap leaves many residents with unmet health needs and increased reliance on costly emergency services for conditions that could have been effectively managed earlier.

Primary care is the cornerstone of a strong healthcare system, essential for building healthier communities, enhancing quality of life, and fostering long-term public health benefits. Regular primary care visits establish consistent relationships between patients and providers, enabling effective management of chronic diseases, continuous health monitoring, and the development of trust.

NBCH serves a culturally diverse and economically disadvantaged patient population, with 85% of its patients living at or below 100% of the Federal Poverty Level. **Expanding primary care services is a crucial step toward:**

- 1) **improving access and delivering high-quality healthcare for all patients,**
- 2) **addressing health disparities, and**
- 3) **promoting equity in the community.**



more access.
better care.



THE GOAL

To renovate the newly acquired former Rite Aid pharmacy building on Purchase Street, adjacent to the existing health center. The development of 13,000 square feet will address the growing demand for primary care services and increase capacity to serve the greater New Bedford region effectively.

This primary care expansion is a vital initiative focused on providing high-quality medical services, improving patient care, enhancing operational efficiency, and fostering community wellbeing. By alleviating current space constraints and integrating advanced medical and IT infrastructure, the project will support a modernized healthcare delivery system tailored to meet the needs of the community.

The expanded facility will provide essential primary care services, including:

Preventive care: Flu shots, blood pressure checks, cancer screenings, and other proactive health measures.

Early detection and treatment: Identifying and managing serious illnesses before they progress.

Chronic disease management: Comprehensive care for conditions such as diabetes, hypertension, HIV/AIDS, asthma, and chronic pain.

This expansion represents a significant step toward improving access to equitable, high-quality healthcare for the New Bedford community.

This transformational project will expand the health center's footprint and help to improve healthcare access and primary care for families leading to healthier communities.

- 13,000sf Primary Care Facility
- All Services in 1 location in Downtown New Bedford!

• Welcoming Reception Area with Bi-Lingual Staff

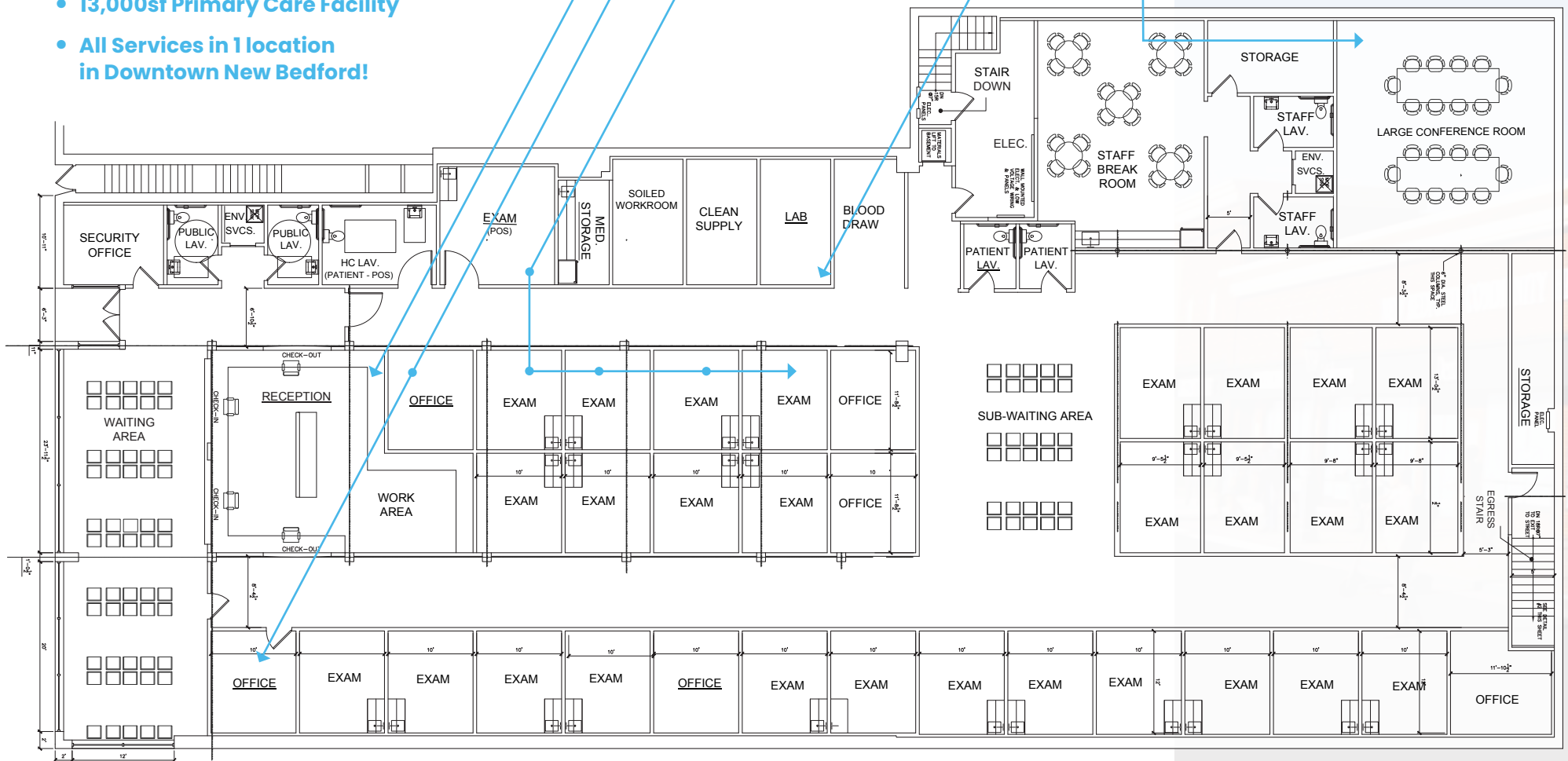
• 3 new Primary Care Doctors with the capacity to see approximately 3,000 new patients annually

• 30 Fully Equipped Exam Rooms

• Onsite Laboratory

• In-House Community and Training Rooms

• Adjacent Pharmacy and Dental



In addition to expanding primary care, this campaign will help revitalize Purchase Street by enhancing the front façade* and creating a seamless connection between all the buildings and services of New Bedford Community Health.

*draft rendering



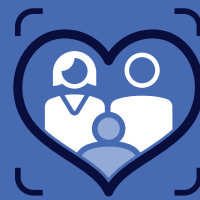
New Bedford
Community Health

CAPITAL CAMPAIGN

more access. better care.

NBCH is committed to proactive outreach to engage patients in more frequent care, especially those who have never accessed the health center.

This transformational construction will expand the health center's footprint and help improve healthcare access and primary care for thousands of families leading to healthier communities.



The new facility will feature **at least 30 new exam rooms** equipped with **state-of-the-art medical equipment** and designed to provide a comfortable and efficient environment for both patients and healthcare providers.

Increased exam room space also means **reduced wait times**, offering roughly **3,000 more appointment slots a year**, and the ability to serve patients better and more frequently.

This expansion means that **more families** will have access to timely medical care, which is crucial for managing chronic diseases, addressing acute health issues, and ensuring preventative care.

Ultimately, this will lead to improved health outcomes and a higher quality of life for the community.

Building for a Healthier Future



CAPITAL CAMPAIGN – Budget

USE OF FUNDS

● RiteAid Building Purchase	930,000
● Construction	4,305,000
● Equipment, Furnishings, Fixtures	485,000
● Architecture & Engineering	260,000
● Other Development Costs	160,705
Total Expenses	6,140,705

SOURCE OF FUNDS

● NBCH – Operating Reserves	956,139
● Federal and State Funding	446,000*
● Capital Campaign	4,738,566
Funding Total	6,140,705

* Actively lobbying Governor to appropriate funds for a \$1.7M earmark in MA Economic Bond Bill passed in Dec 2024.

join us

in building a healthier community for all.

Your generous contributions will make a significant impact in expanding comprehensive care for all, in one convenient location. Help NBCH by supporting the **Building a Healthier Future** Capital Campaign.



Board of Directors

As a Federally Qualified Health Center (FQHC), NBCH is part of an innovative model of care that requires a board of directors to be made up of our patients and our communities. The people we serve always have a seat at the table and with the population in our service area becoming more culturally diverse, NBCH continues to seek out community representatives who complement the racial and ethnic composition of the patients we care for.

Justin Lees, MPA
Chairman

Gerard Kavanaugh
Vice Chairperson

Sidney A. Murray II
Treasurer

Lloyd Bennett
Secretary

Gertrude Caldwell
Leila Charbonneau
Michael D. Habib
Heather Hogan
Tammie E. Perry
Richard Porteus Jr.

Project Team

Kevin Caldwell
The SLAM Collaborative Inc.
Architect

TBD
Contractor

Kevin Berry
Project Manager

Rhonda Veugen
Development Lead

Leadership Team

The leadership team is made up of diverse backgrounds and strategic problem-solving individuals who guide our efforts to increase healthcare accessibility. They are responsible for ensuring financial stability, strategic growth planning, maintaining a diverse workforce, and utilizing information technology to improve quality and health outcomes.

Cheryl Bartlett, RN
President and CEO

Jillian O'Connor, MBA
Chief Financial Officer and
Deputy CEO

Tracey Cohen, MD
Chief Medical Officer and
VP Medical Affairs

Catia Smith, RN
Chief Clinical Operations Officer

Liston Broughton
Chief People and Culture Officer

Joyce Dupont, MSHA, MLT, ASCP
Chief of Value Based
Services Officer

Kevin Berry
Chief Facilities Officer

Scott King
Chief Safety Officer

Michael Finni
Chief Information Officer

ways to give

For tax purposes, use non-profit
ID# 04-2675800



online at:
www.gnbchc.org



by mail:
**Greater New Bedford
Community Health
Center, Inc.**
Accounting Office
874 Purchase Street
New Bedford, MA 02740



by phone:
Call **508-342-4257**

To learn more about the
Building a Healthier Future
campaign or to set up a tour,
please contact Rhonda Veugen
at development@gnbchc.org.



wire transfer:
Rockland Trust

ABA Check Routing No: 011304478
Account No: 7456025886
Reference - Primary Care Expansion



**gifts of stock, mutual funds,
or securities:**
DTC# 2663

SEI Private Trust Company
FFC Rockland Trust
Account #6819064
Greater New Bedford Community
Health Center, Inc.



**more access
better care**

Building for a Healthier Future

New Bedford Community Health
CAPITAL CAMPAIGN



New Bedford
Community Health

CAPITAL CAMPAIGN

gnbchc.org